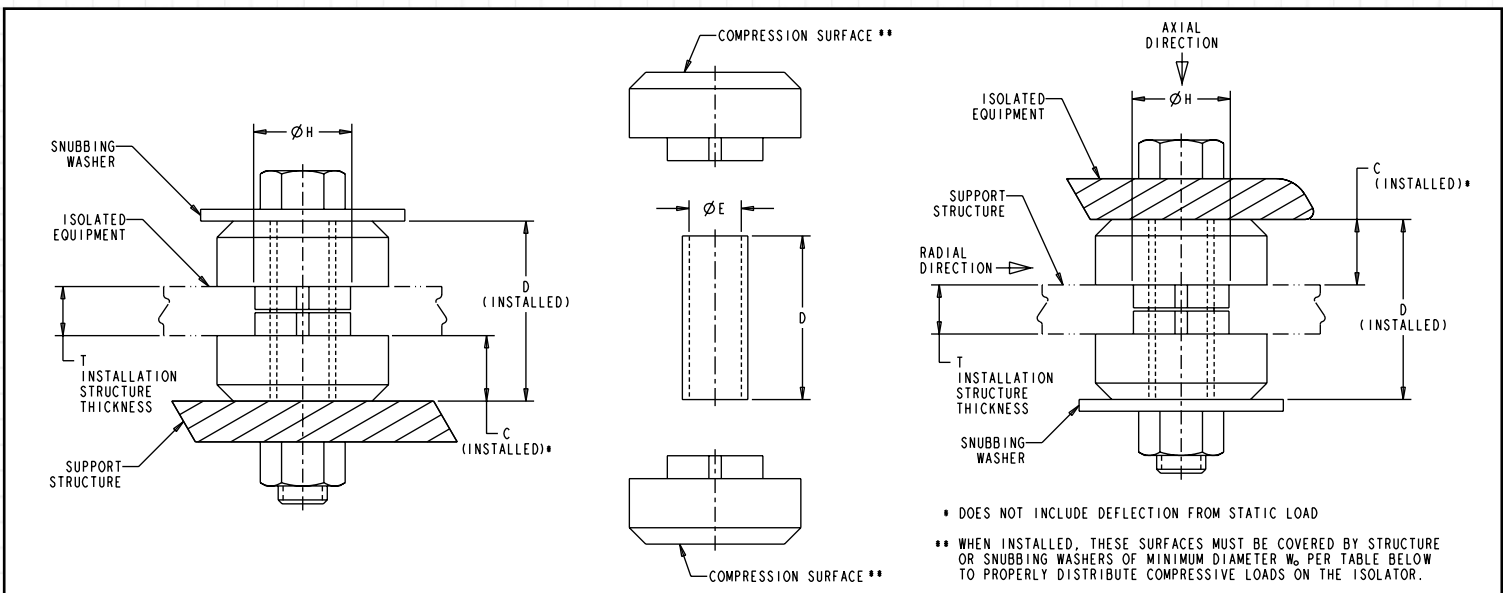


44000 Tube Mount Series Technical Specifications

44000 Series Installation Dimensions

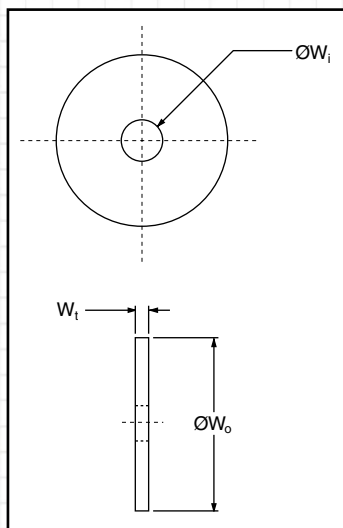
P/N	C		D		Ø E		Ø H		T	
	Isolator Height*		Tube Length		Tube I.D.		Installation Hole Diameter		Installation Structure Thickness	
	inch	mm	inch	mm	inch	mm	inch	mm	inch	mm
44001	0.44	11.1	1.250	31.8	0.397	10.1	0.750	19.1	0.375	9.5
44002	0.69	17.4	1.937	49.2	0.532	13.5	1.250	31.8	0.563	14.3
44003	0.78	19.7	2.430	61.7	0.657	16.7	1.500	38.1	0.875	22.2
44004	0.88	22.3	2.880	73.2	0.938	23.8	2.250	57.2	1.125	28.6
44005	1.07	27.1	3.380	85.9	1.063	27.0	2.500	63.5	1.250	31.8



44000 Mount Series Snubbing Washer

The use of snubbing washers is required to ensure proper static and dynamic loading of the isolator and retention of suspended equipment under severe shock environments.

Snubbing washers are ordered by separate part numbers as shown in the table below. The standard material is low-carbon steel and the standard finish is zinc plate. Other materials and finishes are available upon request.



P/N	Ø W _o	Ø W _i	Ø W _t	Part #
44001	1.56	.391	.090	9810145-01804
44002	2.13	.532	.134	9810145-02804
44003	2.81	.657	.188	9810145-03804
44004	3.88	.938	.250	9810145-04804
44005	5.25	1.063	.375	9810145-05804

**BARRY
CONTROLS**



phone 508.417.7000 ▪ fax 508.417.7224
www.BarryControls.com

HUTCHINSON
WORLDWIDE

